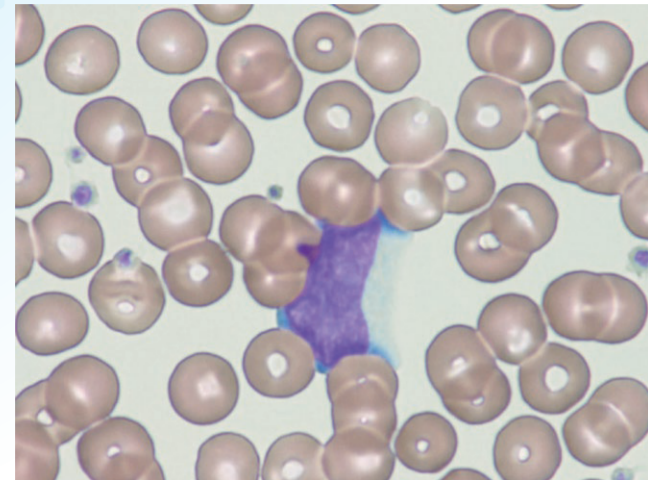
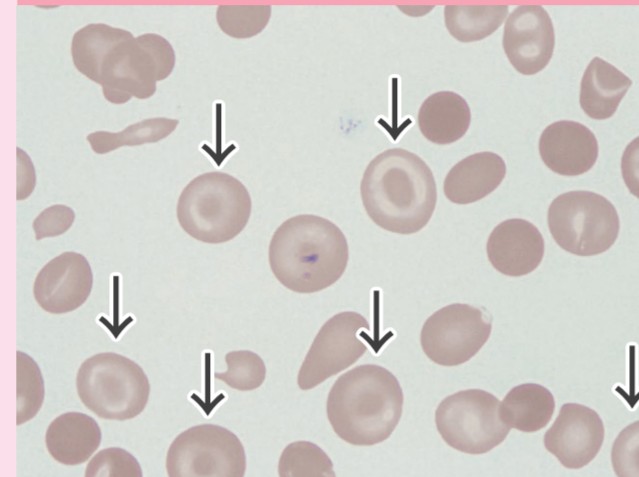


## Célula Sanguínea normal 正常血液細胞

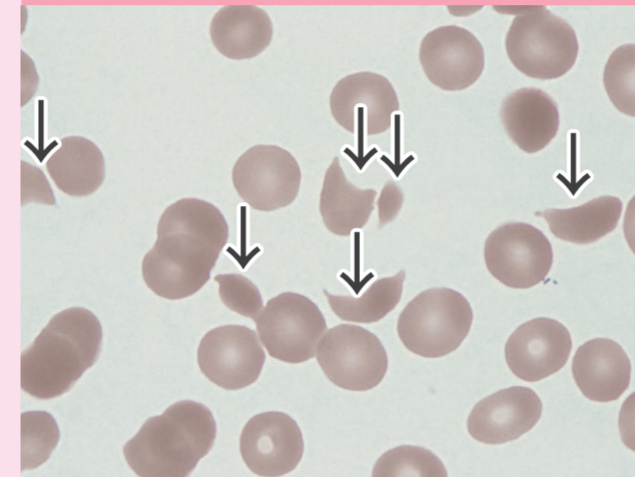


## RBC Morfologia 赤血球系

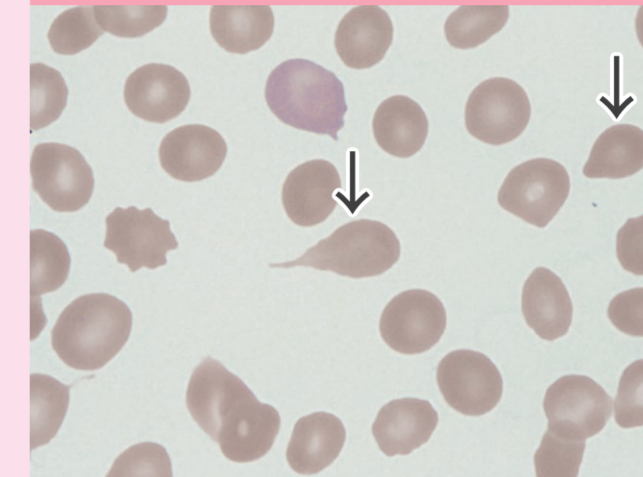
### Célula em alvo 標的赤血球



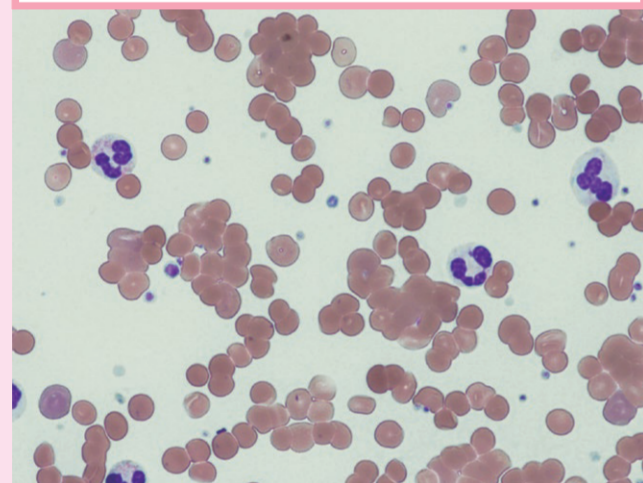
### Esquizócitos 破碎赤血球



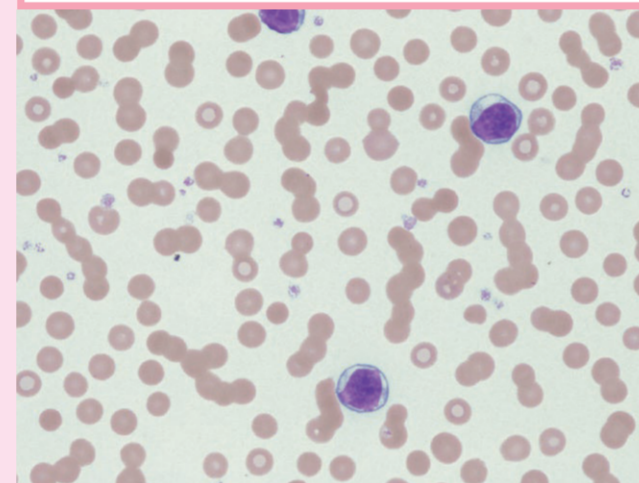
### Hemácias em lágrimas 涙滴赤血球



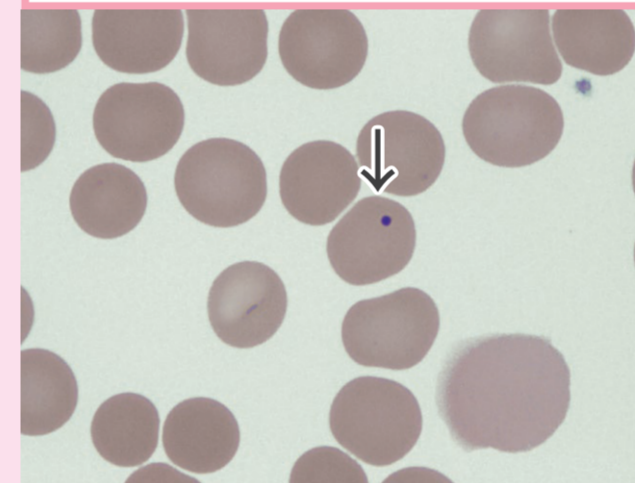
### Aglutininas frias 寒冷凝集素症



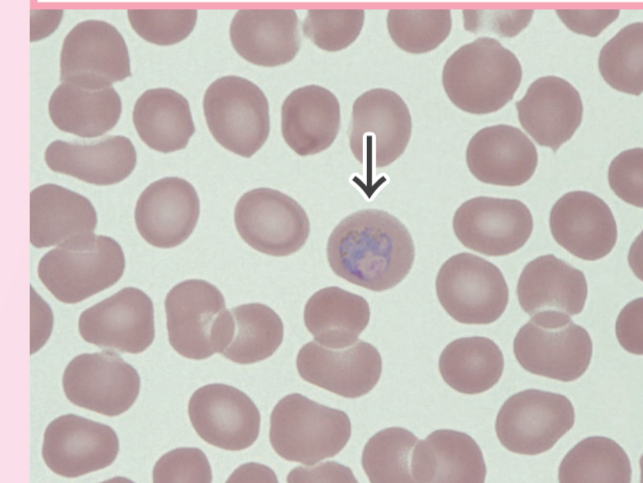
### Hemácias Rouleaux 連鎖形成



### Corpúsculo de Howell-Jolly ハウエル・ジョリー小体

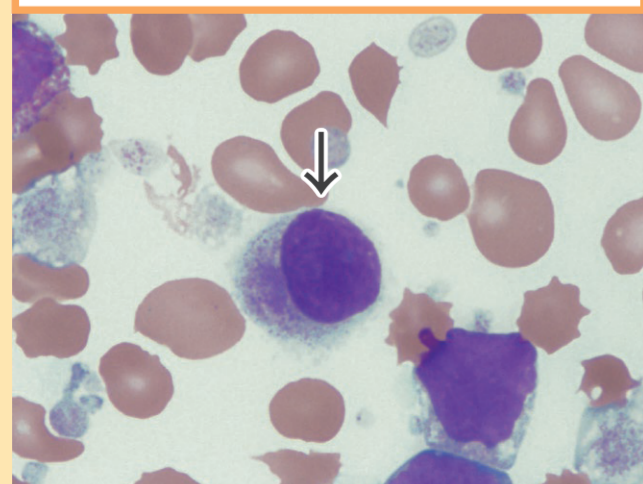


### Malária マラリア

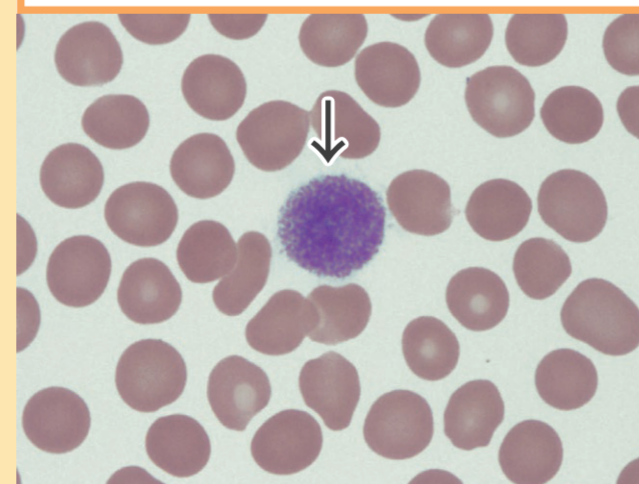


## PLT Morfologia 血小板系

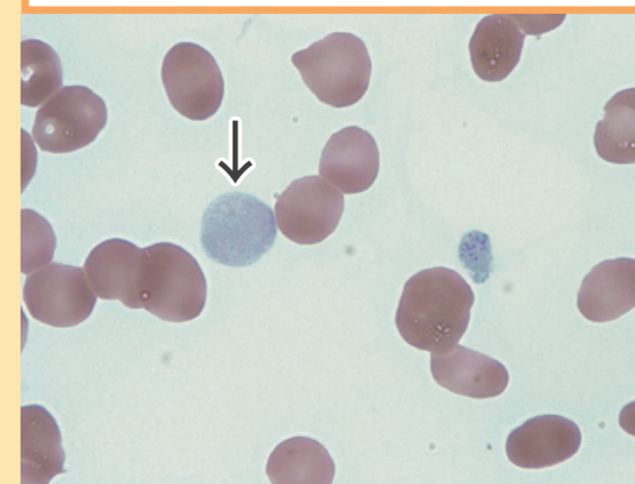
### Micromegacariócitos 巨核球



### Plaqueta gigante 巨大血小板



### Plaquetas hipogranulares grandes 顆粒の乏しい大血小板



### Pseudotrombocitopenia EDTA依存性偽性血小板減少症

